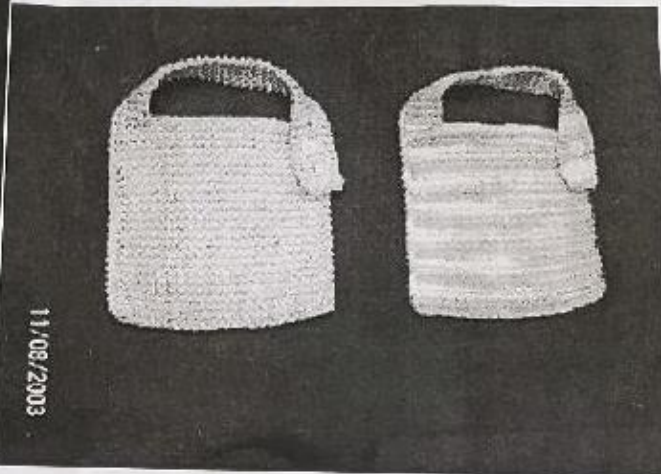


Simple Baby Bib



Material:	Size 9 needles Cotton heavy worsted weight yarn $\frac{1}{2}$ to $\frac{5}{8}$ inch button
Gauge:	4 sts/inch

Cast on 25 stitches

Knit every row until bib is square (about 6 inches--these shrink a bit) you can knit an extra inch or so to compensate for this

Cast off/bind off 20 stitches

Knit every row until strap is 7-8 inches long from cast off edge

Buttonhole row: Knit two stitches, yarn over, knit two together, knit one

Knit until 3 ridges show after buttonhole (5 rows)

Repeat buttonhole row

Knit until 3 ridges show after buttonhole (5 rows)

Repeat buttonhole row

Knit until 3 ridges show after buttonhole (5 rows)

Bind off remaining stitches

Sew button on the base of the bib on the side opposite the strap

Pattern Note: The pattern assumes you use Sugar n Cream or Peaches n Cream or Lion Cotton they will knit to this gauge; with Sugar Babies